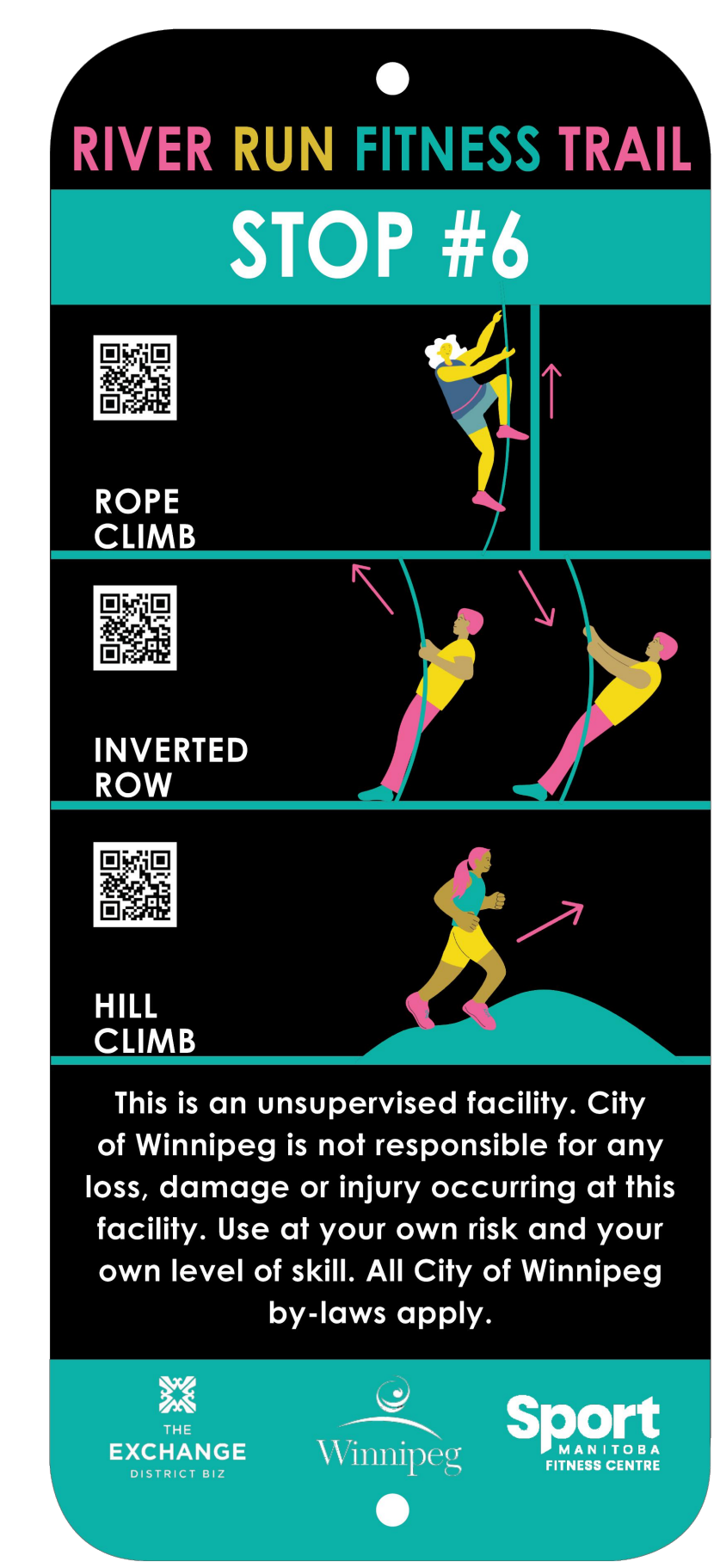
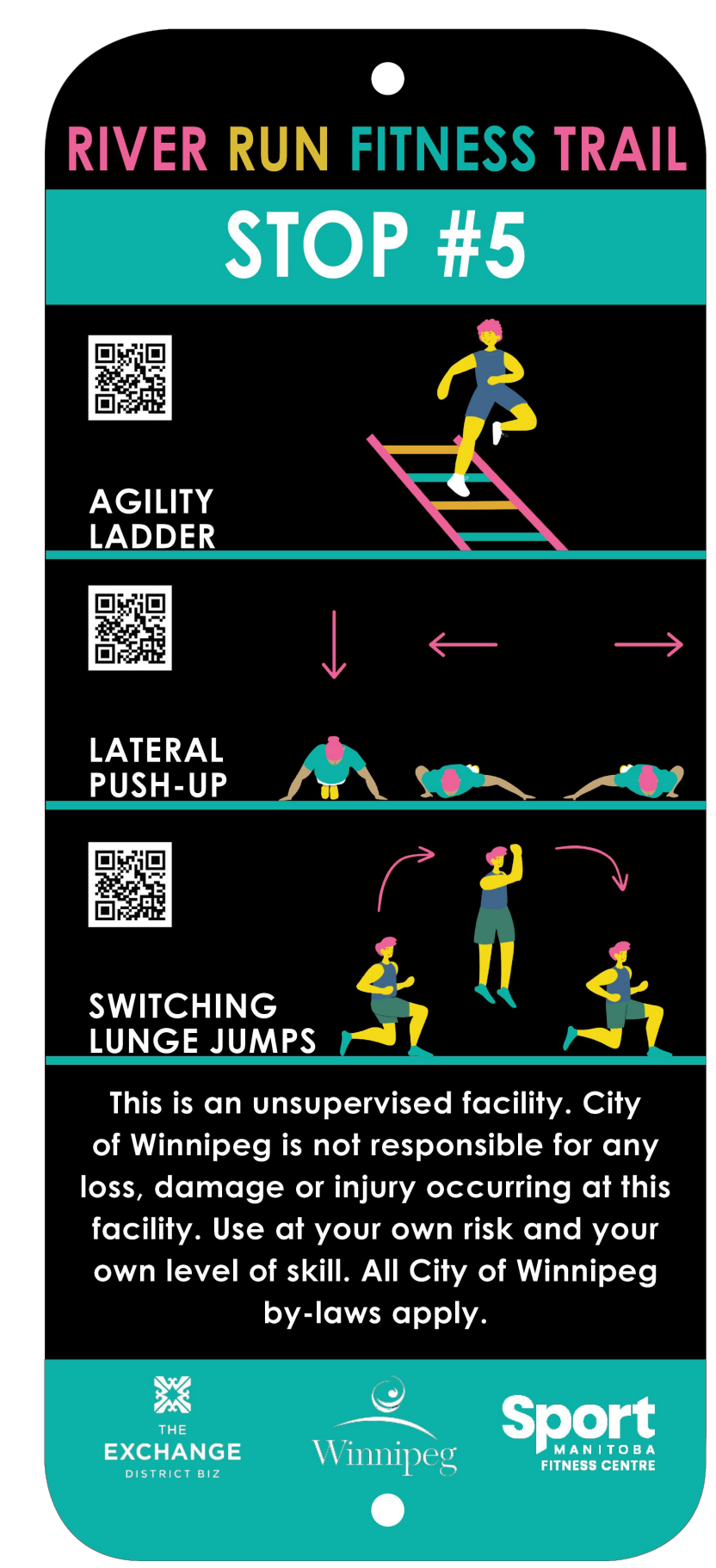
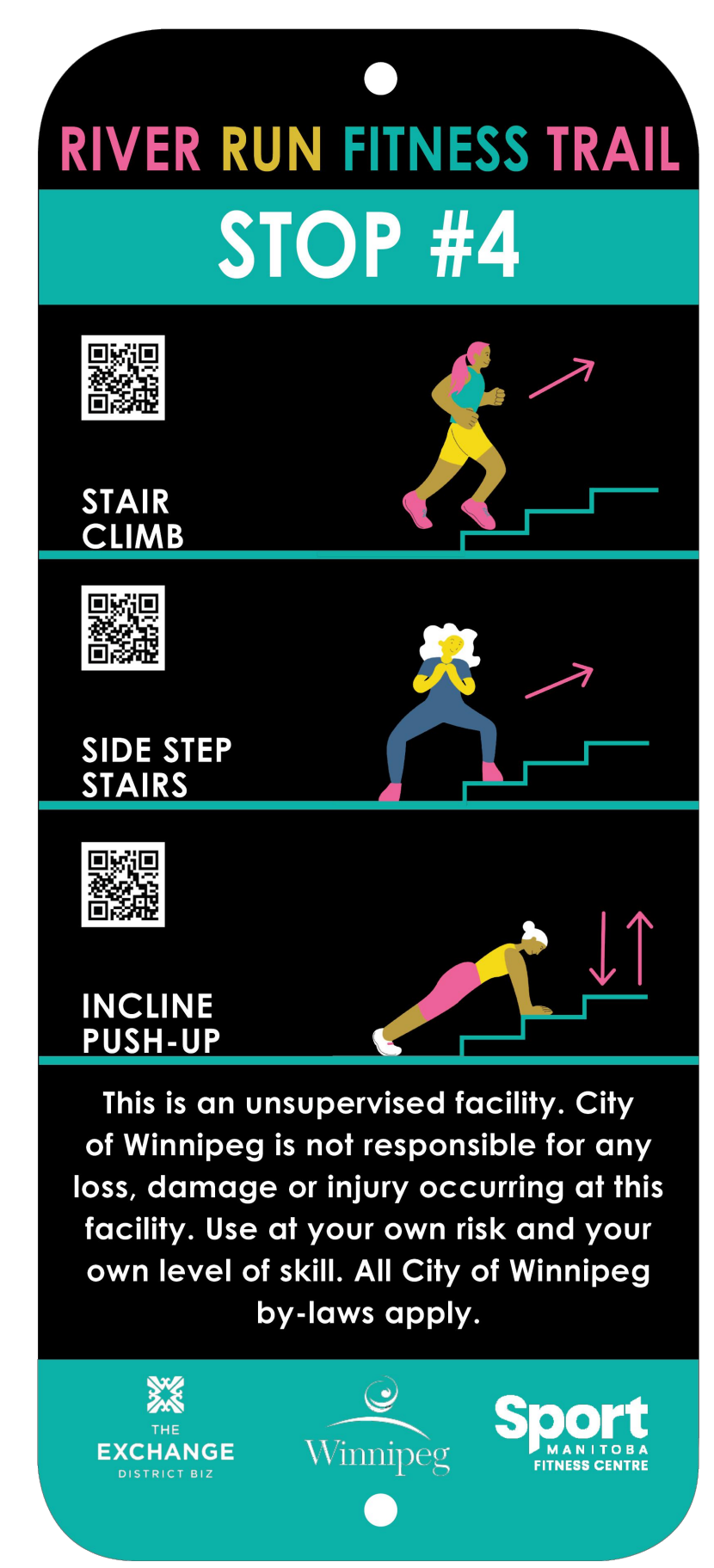
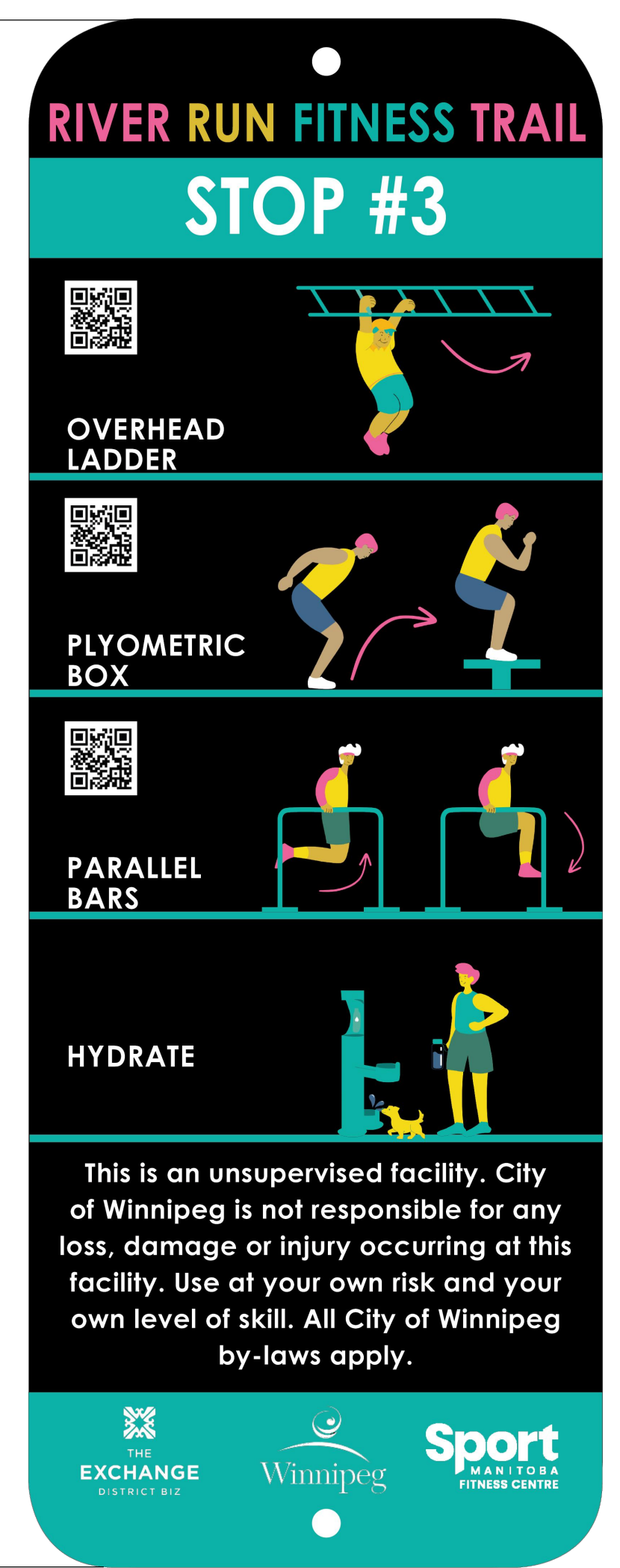
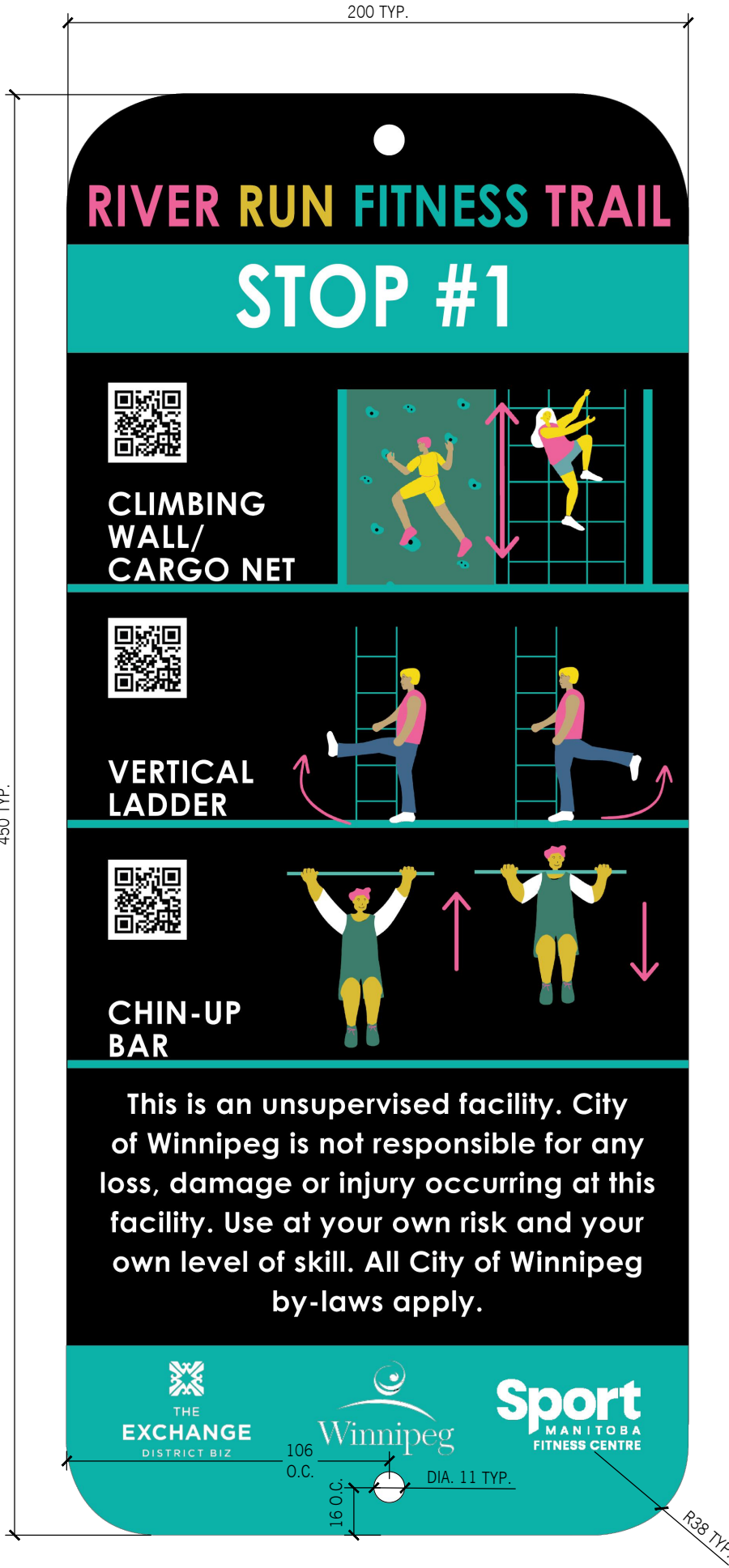


Drawings and specifications, as instruments of service are the property of the architect, the copyright in the same being reserved to him. No reproduction may be made without the permission of the architect and when made, must bear his name. All prints to be returned to the architect. The contractor shall verify dimensions and data noted herein with conditions on the site and is held responsible for reporting any discrepancy to the architect for adjustment. This drawing shall not be used for building purposes until countersigned by:



- NOTES:
- SUBSTRATE: 5052 H38 SIGN GRADE ALUMINUM (2MM THICKNESS)
  - SHEETING: AVERY DENNISON ENGINEER GRADE REFLECTIVE (T-1500 SERIES) CW ANTI-GRAFFITI, UV RESISTANT LAMINATE (DL-1000 SERIES) - 7 YEAR LIFE EXPECTANCY
  - IMAGE: DIGITALLY PRINTED AS PER ARTWORK PROVIDED (PROOF TO BE SUPPLIED PRIOR TO PRODUCTION FOR APPROVAL)
  - FINISHING: ROUNDED CORNERS (38MM RADIUS) AND TWO 11MM DIAMETER HOLES FOR MOUNTING AS NOTED ON DRAWINGS
  - BACK OF ALUMINUM SIGN TO BE BLACK IN COLOUR
  - MOUNTED TO POST WITH TAMPER-PROOF STAINLESS-STEEL BOLTS

1 STOP 1-6 INSTRUCTIONAL SIGNAGE AND GRAPHICS  
L2.2 1:2

ISS. REV	YY / MM / DD	DESCRIPTION	BY
02	24 / 11 / 08	ISSUED FOR CONSTRUCTION	CA
01	24 / 09 / 05	ISSUED FOR 66% REVIEW	CA

**ft3**  
Architecture  
Landscape  
Interior Design

CONSULTANT FILE NAME:  
23692 STEPHEN JUBA PARK FITNESS TRAIL

CLIENT:  
CITY OF WINNIPEG  
PLANNING & URBAN DESIGN DIVISION  
PLANNING PROPERTY & DEVELOPMENT DEPARTMENT

STEPHEN JUBA PARK FITNESS TRAIL

BD OPPORTUNITY No.: 971-2024 SHEET 5 OF 6

LANDSCAPE SITE DETAILS

DESIGN	KS:BG	DATE - Y / M / D	24 / 11 / 08
CHECKED	CA	APPROVED	PROJECT No.: 23.692

L2.2